



Oxley Creek Catchment Association Inc.

Annual Report



2018



President's Address

Welcome to all Oxley Creek Catchment Association members here tonight. OCCA is very grateful to all of you who continually work to help manage and coordinate our many activities with the common aim of conserving and enhancing the environments in our Oxley Creek catchment.

This last year OCCA has continued to engage with the community, governments and industry through key projects and planning initiatives.

We welcome the recent release of the Oxley Creek Transformation Master Plan. This is the best opportunity for us to achieve common objectives to rehabilitate areas of the catchment for the benefit of future generations. I and a number of OCCA staff and members were involved in joint consultations and constructive workshops to develop the plan to focus on environmental, social, economic and sustainable needs of our catchment. We look forward to the transformation of the Oxley Creek Common, Archerfield Wetlands and other key areas with the development of parklands, walking and cycling trails and other recreation and community facilities. We are hopeful that, through the Master Plan and the \$100M funding over 20 years, a permanent home for OCCA, providing administration and meeting facilities and room for our plant nursery and Biodiversity Services, will be developed. We are privileged to have Scott Chaseling from OCT Project Team address us here tonight.

This year saw the sixth Peaks to Points Festival held from 14-29 July across Brisbane's southside. It was the most successful yet with over 5000 enthusiastic visitors enjoying the Family Day at the Oxley Creek Common on 15 July and some 40 events spread across sites from Ipswich to Moreton Bay. As President, I participated in 16 of these events with a highlight for me being the birdwatching at Armstrong Park, Rosewood, part of the Ebenezer district of the Bremer River. Not only is this site now recognized as an International eBird Hot Spot; but it was named after my father, grandfather and great grandfather's families who settled along Seven Mile Creek from 1856, when it was first surveyed.

With the help of David Kent and other Management Committee members, OCCA has updated its Strategic Plan to guide us through the next few years with relevant actions.

Our Program Manager, Phil Gunasekara has been active in developing monitoring frameworks in conjunction with Healthy Land and Water and other catchment groups to assess the impact of on-ground restoration works carried out by OCCA's

Biodiversity Services. Using this framework, OCCA and Biodiversity Services will be able to measure the environmental, biodiversity and social benefits of their projects and promote the overall value of the work.

OCCA is keen to work with the Indigenous community and to this end we were happy to participate in the Brisbane Catchment Networks workshops where we gained a greater understanding of the needs of the Indigenous community in our area and their cultural inter-relationships.

OCCA, through myself and other Management Committee members including Lynn Whitfield and Dave Kent, continues to engage with the other catchment groups in the Brisbane Catchments Network. To further strengthen the linkage, Lynn Whitfield, OCCA's current Secretary, has recently been elected Vice President of the Brisbane Catchments Network.

OCCA has continued to enjoy the support of local, State and Federal Government representatives and their staff in our projects. This year we again participated in the Logan Eco Action Festival and were the recipient of Logan City Council Envirogrants to continue our work with landholders around Crewes Creek. We continue to work closely with Brisbane City Council and our Creek Catchment Officers Donna Edwards and Adam Richardt, particularly at Granard Wetlands which is a problematic site due to historic contamination and regular flooding.

OCCA's CreekCare team has continued to actively work with Bushcare Coordinators at 10 expanding sites across the lower catchment. The Oxley Creek Common is fortunate to have the Tuesday Common Carers working hard to remove weeds, establish biodiverse flora for more habitats and allow natural regeneration of the riparian zone along the creek. Our Corporate Volunteers have also been active in our key project areas, helping to prepare, maintain and extend existing plantings.

OCCA has continued its educational activities working with a number of schools on programs addressing water quality through erosion mitigation, vegetation, weed and litter management.

Our Biodiversity Services has been successful in obtaining contracts from councils and businesses to rehabilitate and maintain parks and natural areas across Brisbane and Logan council areas.

This year OCCA has expanded its use of social media, in particular Facebook, thanks to our Partnership Managers Lindsay Wickson and Karalyn Fletcher and Dave Whitfield from Biodiversity Services. I hope you have seen some of the videos, information items and photos from our projects and activities and found them very useful.

Finally, I wish to thank all our harmonious OCCA staff for working together with many willing volunteers to progress our common goals of rehabilitating the Oxley Creek corridor to improve water quality, reduce erosion, mitigate flooding and extend habitat connectivity. These will not only provide environmental benefits but will benefit the whole community.

Thank you all for your support of OCCA and its activities and projects and I hope you will continue to support us next year.

Trevor Ross Armstrong, President



Contents

President's Address	2
1. THE CATCHMENT OF OXLEY CREEK.....	7
2. OXLEY CREEK CATCHMENT ASSOCIATION.....	10
2.1. HISTORY	10
2.2. MISSION STATEMENT AND STRATEGIC PLAN.....	11
2.3. MEMBERSHIP	11
2.4. ORGANISATIONAL STRUCTURE.....	12
2.5. PARTNERSHIPS.....	15
3. REPORTS	16
3.1. GENERAL MEETINGS	16
3.2. ADVOCACY	17
3.3. EXECUTIVE OFFICER'S REPORT	18
3.4. EDUCATION AND PARTNERSHIPS MANAGER'S REPORT	19
3.5. CATCHMENT PROGRAM MANAGER'S REPORT	26
3.6. BIODIVERSITY SERVICES MANAGER'S REPORT	28
3.7. CREEKCARE COORDINATOR'S REPORT	30
3.8. TUESDAY COMMON CARERS REPORT	33
3.9. NURSERY MANAGER'S REPORT	34
3.10. VOLUNTEER MANAGER'S REPORT.....	34
3.11. PEAKS TO POINTS FESTIVAL REPORT	36
3.12. BCC CREEK CATCHMENT OFFICER'S REPORT.....	38
3.13. TREASURER'S REPORT.....	40
4. AUDITOR'S REPORT & STATEMENTS OF ACCOUNTS.....	42
5. MAPS OF OCCA PROJECT SITES.....	47

1. THE CATCHMENT OF OXLEY CREEK

Oxley Creek, a tributary of the Brisbane River, drains a catchment area of 26 000 ha (260 km²) within the local government areas of Logan City, Brisbane City and a small area of Ipswich City Councils.

The source of Oxley Creek rises on the north-eastern slopes of Mt Perry in the area of Flinders Peak. The creek runs for 70 km in a north easterly direction and flows into the Brisbane River at Tennyson/Graceville. Its tributaries on the east, from south to north, are Sheep Station Gully, Stable Swamp Creek, Moolabin Creek and Rocky Water Holes. On the west, from south to north, there is Crewes Creek which joins Oxley south of Edwards Bridge, then Blunder Creek which rises within the Greenbank Military Training area and flows under Johnson Road and then through Brisbane South Industrial Park and the suburbs of Heathwood, Doolandella and Parkwood. Hanleys Creek, along with Boss, Farley and Ordinance Creeks joins Blunder Creek near Bowhill Road, and further north Blunder Creek joins Oxley Creek, south of the Ipswich Motorway within the Archerfield Wetlands area. Little Doris Creek rises near the Oxley Golf Course and Mayfly Creek (yet to be officially named) and Pennywort Creek join Oxley Creek at Oxley and Corinda respectively.

The southern section of elevated land in the headwaters of the catchment, is largely covered by dry forest, and in parts is relatively sparsely populated. However, as the grazing and turf farms are being replaced by rural residential land, urban development is increasing along with more road, rail, power and water distribution infrastructure. The latest proposal for the “Inland Rail Kagaru to Acacia Ridge Freight Route” and the proposed connection to Bromelton will have impacts in this area. Fortunately, the Greenbank Military Training Area continues to provide a substantial area of undisturbed vegetation. However, connections to the north have been compromised with the recent upgrade of Johnson Road. An innovative solution is required to maintain the glider pathways across Johnson Road at the Stapylton Road intersection.

The middle part of the catchment contains the tenuously vegetated linkages of the Flinders-Greenbank-Karawatha (FGK) Corridor. This Corridor includes a mosaic of lands under a variety of ownerships, tenures and jurisdictions including the major bushland areas of Flinders Peak, Mount Perry, White Rock, GMTA, Forestdale, Larapinta and Parkinson, together with the residential and industrial lands of Larapinta, Heathwood and Forest Lake.

Other suburbs completing this central section of the catchment are Sunnybank, Calamvale, Algester, Coopers Plains, Archerfield, Durack, Inala, Doolandella, and parts of Oxley.

The main tributary of Oxley Creek, Blunder Creek, rises within the GMTA, flows north under Johnson Road and then through Brisbane South Industrial Park and the suburbs of Heathwood, Doolandella, and Parkwood before joining Oxley Creek at Oxley. These suburbs are now being further developed along with much of Pallara north of Brookbent Road. There are important vegetated links between Blunder and Oxley Creeks in the once rural areas of Pallara and Willawong. As development takes over, retention of the vegetation is essential, not only for the fauna connections, but also for stabilisation of the waterway edges. Other suburbs within this middle section of the catchment are Calamvale, Algester, Coopers Plains, Acacia Ridge, Archerfield, Forest Lake, Doolandella, Inala, Durack and parts of Oxley.

Industry is now well established around the Willawong landfill and Transfer Station. The exhausted sand extraction sites along Paradise Road at Larapinta are now trading as Motorway Business Park and Radius Industrial. Repair and rehabilitation of all the exhausted sand mining areas is needed. South and north of Johnson Road, there is serious headward erosion occurring and mitigation of this sand movement is necessary.

Further north Paradise Wetlands is being redeveloped as a residential area and the BMI Group, along with Warapar Resources and TransPacific Industries, are repositioning their properties in accordance with changes in practices and planning regulations. Portions of these properties along with the area around the decommissioned Inala Sewage Treatment Plant, and the ecologically valuable Archerfield Wetlands should provide improved habitat connectivity and biodiversity outcomes for this section of the catchment.

The northern part of the catchment stretching from the Ipswich Motorway to the mouth of the creek at Graceville/Tennyson, has vitally important flood plain areas which contain the Brisbane Boys College Sporting Fields, St Aidan's School's 'Ambiwerra', Gregory Terrace Playing Fields, Brisbane Golf Course, the Oxley Creek Common, the Brisbane Markets, the Oxley Wastewater Treatment Plant, the Croatian Club and soccer fields plus the major industrial area at Rocklea. To the east, the highly urbanised and in part industrial areas of Sunnybank, Coopers Plains, Salisbury, Acacia Ridge, Tennyson and Moorooka are all within the catchment. On the west, the

suburbs of Oxley, Corinda, Sherwood, Graceville and Chelmer complete the catchment.

Oxley Creek and its tributaries are recognised for their significant riparian vegetation forming important local linkages, as well as to the Brisbane River. The connections via Moolabin Creek and Rocky Water Holes to Toohey Forest provide a “green” link across to the Norman and Bulimba Creek catchments, linking along the southern side of the Brisbane River.

To the west of the Oxley Creek catchment is the Wolston and Centenary Catchments group with whom OCCA enjoys a long-standing collaborative relationship. Once again in July 2018, OCCA brought together all the community and environment groups along the southern side of the Brisbane River to celebrate their waterways, natural areas and vegetated connections, in the Peaks to Points Festival 2018.

The Brisbane City Council has recently released the “Oxley Creek Transformation Master Plan” which provides for a number of priority projects. OCCA looks forward to continue working with this dedicated team to implement the projects and re-establish a revitalised green corridor along Oxley Creek.

Anne Clarke OAM, Executive Officer



2. OXLEY CREEK CATCHMENT ASSOCIATION

2.1. HISTORY

In 1995 members of the Oxley Creek Environment Group Inc. and the Australian Marine Conservation Society Inc. approached the (then) Brisbane River Management Group (BRMG) to establish an Integrated Catchment Management (ICM) program in the Oxley Creek catchment, and were granted permission to trial a pilot urban ICM structure. BRMG received Commonwealth funding to establish a Catchment Coordinating Committee and to prepare and develop plans for the catchment. With the support of BRMG, Brisbane City Council, Logan City Council and (then) Beaudesert Shire Council the Committee commissioned a *State of the Oxley Creek Catchment Report* and *Water and Land-Use Impact and Management Analysis*. This was then followed by intensive consultation and planning culminating in the release of the *Oxley Creek Catchment Management Plan* early in 1999.

BRMG (now Healthy Land and Water) helped fund a Catchment Coordinator until June 2000. Since then the Committee has relied on successful grant applications along with profit from educational and corporate programs and Biodiversity Services, to employ its staff.

The Association was guided initially by a fully endorsed Catchment Coordinating Committee under the ICM Program. It is now overseen by an elected Management Committee. OCCA is an Incorporated Association and is endorsed as a Deductible Gift Recipient (DGR) under the *Income Tax Assessment Act 1997*. In 2006, OCCA was also endorsed for charity tax concessions - Income Tax Exemption, GST Concessions and FBT rebate.

Initially, the Association was located in Brisbane city centre, then from September 1999 to May 2001 it operated from an office at the Rocklea Research Farm, and then in rooms generously provided by Brisbane Markets Limited. All OCCA functions including the plant nursery and Biodiversity Services vehicles and storage containers are now established in a house at Coopers Plains, courtesy of Consolidated Properties Group.

2.2. MISSION STATEMENT AND STRATEGIC PLAN

Mission Statement

To protect and enhance the natural environment and resources of the catchment of Oxley Creek by partnering, educating, advocating and participating in catchment management.

Objectives

1. Partner with community organisations, businesses, industries and governments to further the mission of the Association.
2. Educate the community of residents, businesses, public institutions (including schools) and governments in the sustainable land-use and conservation practices needed in the catchment, recognising the interactions between land, waterways, vegetation and wildlife;
3. Advocate sustainable land-use and conservation practices needed in the catchment recognising the interactions between land, waterways, vegetation and wildlife; and
4. Encourage community participation in catchment management activities.

Strategic direction

The initial Strategic Plan was finalised in December 2014. The Plan identifies priorities and goals for OCCA over the next 4 years around our objectives and key programs. The Plan has recently been revised to reflect completed projects, changed circumstances and revised priorities until 2021.

2.3. MEMBERSHIP

The Association currently has 87 financial members:

Life Members	5
Community Groups	0
Schools	0
Corporate	4
Gold Members	2
Individual and Household	76

OCCA reaches a wider audience through its newsletter and its email updates which goes to over 600 people and groups, and through its website and Facebook page which has over 860 “likes” and nearly 700 followers.

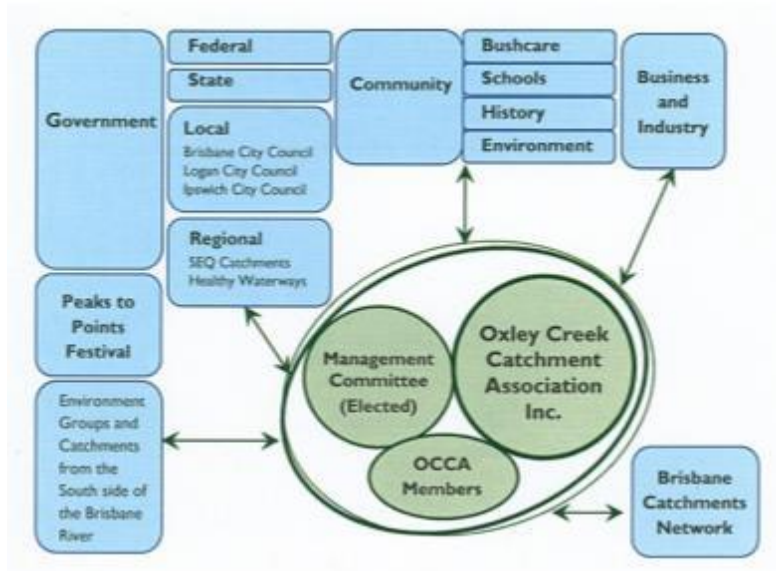
Susan Hodgson, Business Support Officer

2.4. ORGANISATIONAL STRUCTURE

The Management Committee remains central to OCCA's performance. It helps to guide OCCA's activities and support the staff. OCCA's staff over the last 12 months (some of who are paid and others provide their services on a volunteer basis) comprise:

- Anne Clarke – Executive Officer – responsible for OCCA's day-to-day operations and supervision of office administration and staff
- Phil Gunasekara – Catchment Program Manager – responsible for grant applications and project management
- Emma Barry, Camilla Duff-Burford, Lindsay Wickson and Karalyn Fletcher – Partnerships and Education Managers – responsible for administration of the CreekWatch, Education, and Corporate Volunteering Programs
- Chris Jensen – Biodiversity Services Manager
- Susan Hodgson – Business Support Officer and Book keeper – responsible for all office administration and for maintaining OCCA's financial records

OCCA has established alliances with organisations with a similar focus. These include the Brisbane Catchments Network, Healthy Land and Water, and our neighbours in Wolston and Centenary Catchments, Norman Creek Catchment Coordinating Committee, and Bulimba Creek Catchment Coordinating Committee.



OCCA also works with Brisbane, Logan and Ipswich Councils through the Oxley Creek Taskforce and the Oxley Creek Transformation Project, the Natural Environmental Communication Forum and the Oxley Creek – Bremer River Twinning Project.

As a volunteer organisation, OCCA continues to seek members and volunteers to be involved in the work of the Association and its various working groups as well as the activities of the Management Committee.

The Management Committee, including the Executive made up of the President, Deputy President, Secretary and Treasurer, was elected from the members elected to the Management Committee at the AGM in November 2017. Attendance at the 11 meetings held since the 2017 AGM is shown in the table below. The commitment of Management Committee members is greatly appreciated.

Member	No. of meetings attended
Trevor Armstrong, President	11
David Kent, Deputy President	11
Lynn Whitfield, Secretary	8
Nadia Mislin, Treasurer	4
Beryl Roberts	8
Anne Clarke	7
Phil Gunasekara	6
Kirsten Marano	9
Mandy Grayling*	0

* Mandy Grayling was unable to continue as a member of the Committee due to conflicting schedules

Lynn Whitfield, Secretary



2.5. PARTNERSHIPS

INDUSTRY

Absorb Environmental Solutions • Archerfield Airport Corporation • Brisbane Markets Limited • BOC (A Member of the Linde Group) • BMI Resource Recovery • Bunnings • Brisbane Golf Club • Coca Cola Amatil • CSR • Dulux Rocklea • Energex • Graceville Apartments • Holcim Pty Ltd • Powerlink • RACQ Insurance • Rockpress – Rocklea Pressed Metal • Sims Metal Management • Suez • The Construction Training Centre • Warapar P/L • Sony • Telstra • Transurban • Oxley Creek Transformation P/L

GOVERNMENT

Brisbane City Council • Ipswich City Council • Logan City Council • Construction Training Centre • Department of Environment and Science • Department of Housing and Public Works

COMMUNITY

Benarrawa Community Group • Benarrawa Bushcare Group • Brisbane Catchments Network • Brisbane Regional Environment Council • Bulimba Creek Catchment Coordinating Committee • Cliveden Avenue Bushcare Group • Conservation Volunteers Australia • Coopers Plains History Group • Custodians of Francis Outlook • Forestdale Bushcare Group • Friends of Sherwood Arboretum • Friends of Oxley Creek Common • Gaddes Park Bushcare Group • Greenbank Rural Fire Brigade • Healthy Land and Water • Karawatha Forest Protection Society • Kev Hooper Park Bushcare Group • Koala Park Community Garden • Landcare Australia • Les Atkinson Park Bushcare Group • Moorooka Greening • Nosworthy Park Bushcare Group • Oxley Creek Environment Group Inc. • Pamphlett Sea Scouts • Pennywort Creek Bushcare Group • Queensland Landcare • Queensland Water and Landcarers • Richlands Inala and Suburbs History Group • Rikki Bailey Park Bushcare Group • Rocky Water Holes Bushcare Group • Russ Hall Park Bushcare Group • Spring Mountain Residents Association • Spring Mountain Reserve Bushcare Group • Strickland Terrace Park Bushcare Group • Wildlife Queensland • Wolston and Centenary Catchments

EDUCATION

Australian Marine Conservation Society Inc. • Toohey Forest Environment Education Centre • Australian International Islamic College • Brisbane Boys College • Corinda State High School • Durack State School • Greenbank State School • Our Lady of the Sacred Heart, Darra • Rocklea State School • St Aidan's Anglican Girls School • St Joseph's Primary School, Corinda • St Marks Catholic Primary School • St Margaret's Anglican Girls' School, Ascot • St. Peter Claver College, Riverview • St. Pius X Catholic School • St. Thomas More College, Sunnybank • TAFE Queensland • The Murri School, Acacia Ridge • Watson Road State School

3. REPORTS

3.1. GENERAL MEETINGS

OCCA continues to organise four General Meetings each year on the fourth Tuesday of the months of February, April, June and August where invited speakers discuss environmental and related topics of general interest. The meetings also outline current OCCA activities. There is also a guest speaker at the Annual General Meeting in November. All these meetings are open to members and the general public. The meetings generally take place at the Red Shed, Oxley Creek Common, Rocklea, and are followed by refreshments and opportunity for networking. All presentations are made available on the 'Publications and Presentations' section of the OCCA website www.oxleycreekcatchment.org.au

November 2017 (AGM) – Professor Hugh Possingham, Chief Scientist of the Nature Conservancy, Chris Butcher, Head of Department - Senior Science and Agriculture, Corinda State High School, and Beryl Roberts, Historian and OCCA Native Plant Nursery Manager spoke about the 'Ecological, social and educational values of the Oxley Creek Common'

February 2018 – Dr Paul Campbell gave a pictorial presentation 'Exploring Brisbane's Creeks and Wetlands - A photographic project'

April 2018 – Tom Bates spoke on 'Corinda State High School Agricultural Program – past, present and future partnerships'

June 2018 – Dr Stephen Prowse spoke on 'Grassroots Conservation – Strategies and Challenges'

August 2018 – Howard Briggs spoke on 'Community input into planning in South East Queensland'

In the intervening months, OCCA hosts a free BBQ for members, volunteers and the local community at the Catchment Centre at 9 Macdevitt Street, Coopers Plains, on the last Friday of each of the months of January, March, May, July and September, as well as a Christmas BBQ in December.

Lynn Whitfield, Secretary

3.2. ADVOCACY

OCCA is represented on the following forums:

Brisbane Catchments Network (BCN)

Trevor Armstrong, Lynn Whitfield and Dave Kent variously represented OCCA on the BCN. In 2018 the BCN welcomed a number of guest speakers, organised workshops with representatives of the local Aboriginal community to talk about how we might better work together, and further developed strategies addressing biodiversity issues. At the AGM, Lynn Whitfield was elected Vice-President.

Oxley Creek Transformation

The Oxley Creek Transformation Pty Ltd has been formed to implement the \$100 million, 20-year project to transform the 17km stretch of Oxley Creek covering about 2000ha between the Brisbane River and Johnson Road into a world class green corridor and provide water and land-based recreational activities, walking trails, and urban farms as well as allowing for some economic developments. OCCA's Executive Officer Anne Clarke represents the community on the Oxley Creek Transformation Board.



Oxley Creek Transformation Community Reference Group

A Community Reference Group was formed which included OCCA members Lynn Whitfield, Trevor Armstrong, Beryl Roberts and Ray Ison. The Reference

Group considered the goals and objectives of the proposed master plan and a number of proposed priority projects. A draft Master Plan was released in April for public comment. OCCA made a submission on the draft master plan, highlighting the need to focus on increasing biodiversity and habitat connectivity and protect and rehabilitate natural areas. The final Master Plan was released in October 2018.

Phil Gunasekara - Catchment Program Manager

3.3. EXECUTIVE OFFICER'S REPORT

The momentum of OCCA continues despite the cramped conditions and the ever present deadlines. Our staff and volunteers are outstanding and as in previous years OCCA owes them a great thank you for their untiring hard work and dedication.

Our very hard working Catchment Program Manager Phil Gunasekara, our Biodiversity Services Manager Chris Jensen, and our Business Support Officer Susan Hodgson, have maintained their energy and great work ethic and continue to provide OCCA with inspiration, stability and forethought which gives the organisation its recognition in the wider world. Each of these Officers is responsible for the “overall tone” of the Catchment Centre, and I am confident that OCCA is a happy place for employees, visitors and volunteers.

We very much appreciate the close working relationships that we have with the local Service Clubs such as Rotary and Lions. In February 2018, in response to a Rotary global pledge, “to plant a tree for every member of Rotary”, three local Rotary Groups, Taylor Bridge, Inner West (the new name for Rocklea Rotary), and Archerfield came together at the Oxley Creek Common. A wonderful morning evolved and about 250 trees were planted. In May 2018, OCCA's activities were shared with Taylor Bridge Rotarians at their weekly Tuesday Meeting.

The Rotary Club of Logan at Cornubia assisted us with food for our very successful 2017 “Weed Management Workshops” at Crewes Creek. To recognise the Club's generosity, a presentation was given in April, and we learned more about Rotary and their “Four way Test” which asks questions related to the things that we think, say and do:

1. Is it the truth?
2. Is it fair to all concerned?

3. Will it build goodwill and better friendship?
4. Will it be beneficial to all concerned?

Again this year, the Brisbane Oxley Sherwood Lions Club remembered OCCA with a donation for which we are most grateful.

Partnerships Officer Camilla Duff-Burwood resigned in March and we are most grateful to her for her ideas and wonderful organisational efforts. Emma Barry was able to give us some extra time until Lindsay Wickson joined us for two days per week. We thank Emma for her generosity, and the experienced intellectual input she has given to our processes. Lindsay has proved to be an enthusiastic, knowledgeable and 'hands on' asset to the team. In addition, Karalyn Fletcher, who also works with Biodiversity Services, has become an enthusiastic addition to the Partnerships Team assisting with and/or leading our Corporate Events and Education activities. Similarly, Josh Hall has been able to assist at times. Currently, we are giving increased attention towards the development of Educational Resources in line with the new Australian Curriculum. OCCA is hopeful that in time, our inputs to educational resources will be such that we will achieve improved results with our overall "catchment wide" education efforts across the different age groups.

OCCA continues to be most grateful to Consolidated Properties for the use of our Coopers Plains house and surrounds. However, as I said last year, the need for larger accommodation is becoming more acute as storage space is very limited. OCCA is hopeful that over time we will have a permanent home through the Oxley Creek Transformation process.

OCCA is also grateful that the Department of Housing and Public Works allows us to hold our general and other meetings at the 'Red Shed' on Oxley Creek Common.

Anne Clarke OAM, Executive Officer

3.4. PARTNERSHIPS AND EDUCATION MANAGER'S REPORT

The Education and Partnerships Team is responsible for developing and managing OCCA's:

- education program
- corporate volunteering program
- CreekWatch program

- community engagement

Education Program

Based on a foundation of experience delivering successful outdoor education classes, OCCA's education program continued to thrive this year. The Education and Partnerships Team rolled out the first of its Outdoor Education Modules; which was created to streamline the coordination of each event, deliver consistency across events and for use as a marketing tool to showcase OCCA's educational capabilities. The Modules are based on the Australian Curriculum but may be tailored to include class-specific learning objectives or elements offering a flexible outdoor or in-house environmental education experience for primary, secondary and post-secondary schools.



This year, OCCA worked with five schools (including three returning education providers) over six separate events reaching almost 300 students and allowing OCCA to:

- share and nurture environmental stewardship values amongst youth
- teach and/or demonstrate environmental sustainability principles and management strategies (e.g. erosion, litter, native/non-native species, flora/fauna habitat values, water quality, vegetation identification, etc.)
- build partnerships with schools and relationships with teaching professionals throughout the catchment
- tap into the extensive knowledge and skills of our staff and volunteers
- provide a source of income for OCCA.

Returning Education Providers

OCCA worked with 93 Year 7 geography students from St. Aidan's Anglican Girls School led by teacher Anne Paige, in April 2018 and again in October 2018. Both events took place at the Oxley Creek Common and included tree planting. OCCA staff communicated the importance of erosion control, the significance of native species, land management practices and the role of community environmental groups.

In September 2018, OCCA hosted students from Graceville State School at the Oxley Creek Common building on a long history (circa 2007) of outdoor educational collaboration. This year over 80 Year 4 students participated over two days learning about the relationship between macro invertebrate species abundance and water quality, the rate of litter decomposition, recycling, plastic substitution, and the cumulative effects of waterway pollution within the catchment.



For the second year in a row, OCCA teamed up with Brisbane City Council to deliver its 'Bush Neighbours' program where OCCA delivered a macroinvertebrate lesson and assisted in a litter clean up at Kev Hooper Park, Inala with 80 Year 4 students from St. Mark's Catholic Primary School.

New Education Providers

The Murri School (aka the Aboriginal and Islander Independent Community School) located in Acacia Ridge engaged OCCA to deliver a Year 12 Outdoor Education Workshop that would build on and add a practical component to the content the students had been learning in the classroom. The Workshop focused on macro invertebrate sampling and identification, water quality testing, plant identification and stand structure. Follow up questions prompted critical thought about how the environmental parameters assessed interacted with one another in the ecosystem and the potential impact of various adjacent land uses on that system.

OCCA worked with a Year 11 geography class from Brigidine College on land management and environmental reclamation through macro invertebrate identification (and its subsequent implication of water quality in Oxley Creek), plant/weed identification and water quality testing.

The feedback received from this year's OCCA's Educational Programs was positive among teachers and students alike. From an anecdotal point of view, the students appeared to really enjoy getting their hands dirty during tree planting events where they could immediately see the benefit of their

work. Students also derived a lot of excitement from the macro invertebrate sampling.

The Education and Partnerships Team will continue to develop and roll out the Years 1-12 Outdoor Education Modules in 2019. Our new fee structure, which saw our hourly rate increase by \$15/hr occurred seamlessly this year with no perceivable effect on our bookings. The Team will also continue to develop our current relationships with education providers as well as market our services to new education providers going forward.

Corporate Volunteering Program

The Corporate Volunteering Program provides another avenue for OCCA to connect to the broader community in the form of corporate organisations to promote a catchment care message. The program is also an important source of volunteer input to OCCA's rehabilitation projects and the OCCA Plant Nursery as well as providing a source of income.

This year OCCA's Corporate Volunteering Program worked exclusively with Landcare Australia which facilitates the placement of corporate volunteers with various land care groups. Interestingly, OCCA only hosted one corporation through Landcare: Telstra. OCCA worked with Telstra over four events (held in March, May, August and October). Bookings with other organisations were cancelled due to weather or a lack of volunteer interest within the corporation.

The Telstra volunteers undertook tree planting, weeding, plant propagation and nursery maintenance. An opportunity now exists going forward into next year for the Team to potentially re-engage our corporate volunteers via Landcare Australia. The potential is there for OCCA to engage its own corporate volunteers independently of Landcare however in the past new corporate interest have been channelled through the CreekWatch program.

CreekWatch

The CreekWatch program works with local businesses to:

- minimise the impacts of their activities on waterways within the Oxley Catchment
- improve water quality
- protect riparian ecosystems
- reduce litter
- build a culture within industry of caring for their local environment

This program is made possible through the generosity of our on-going partners, RockPRESS, BMI Group, CSR, Dulux and Sims Metal Management. Of our business partners, RockPRESS continues to be the most active regularly dedicating volunteers to OCCA's Success Street Park, Acacia Ridge monthly working bee. The working bee at Success Street continues the restoration works done in late 2016 and late 2017 when over 500 native plants were added to the riparian buffer within the park. In April 2018 OCCA in-fill planted an additional 300 plants and re-launched the program for 2018 with Councillor Steven Griffiths, the Oxley Creek Transformation team, Brisbane City Council, and RockPRESS in attendance.



April 2018 CreekWatch working bee at Success Street, Acacia Ridge

The CreekWatch program hosted a Wildlife Nestbox Workshop as part of the biennial 2018 Peaks to Points Festival. The Workshop raise awareness about hollow dependent species such as gliders, birds and possums that live in the Flinders-Karawatha Corridor and helped to foster a sense of stewardship amongst those who live or work in the area. Thirty people helped to build 15 nest boxes to replace those listed as damaged by the Wildlife Preservation Society of Queensland (WPSQ) who is conducting monitoring studies within the Sergeant Dan Stiller Memorial Reserve. The Workshop was made possible, in part, by the Oxley Creek and Mount Gravatt Men's Shed who measured and pre-cut the wood and CreekWatch business partner Dulux donated the paint used to decorate the new nest boxes. The feedback from this



event was strongly positive and the team hopes to run similar events as part of its Signature Events program.

Going forward, the Education and Partnerships Team would like to market the CreekWatch program to potential new business partners in the two large industrial precincts near Sergeant Dan Stiller Memorial Reserve.

Community Engagement

Engaging the community to participate or take an interest in environmental events or issues can be both challenging and rewarding. As a community-based organization that aims to protect and enhance the natural environment, the ongoing environmental contribution of the community in terms of both expressing interest and taking action is paramount in the realization of OCCA's goals. OCCA delivered several community engagements events in 2018.

In September 2018, OCCA collaborated with the Wilderness Society on a tree-planting event at Oxley Creek Common. The Wilderness Society marketed the event to their already large volunteer base while OCCA provided the expertise. Over 300 shrubs and grasses were planted along the Oxley Creek bank providing the volunteers with new knowledge and skills as well as a sense of achievement with tangible results. Under cover of the red shed, the group created 'seed bombs' – a take on the popular 'guerrilla gardening' trend. The event was well received, particularly amongst the children in the group.



A Rotary tree-planting event took place in February 2018. Over forty volunteers planted 240 trees and donated \$1320 to OCCA for maintenance.

For a second year, OCCA successfully obtained funding from the Community Marine Debris Grant program sponsored by the Sea World Rescue and Research Foundation. OCCA replicated its original 2017 methodology to conduct a marine and terrestrial litter clean up at Simpson's Playground

Reserve in Graceville – where Oxley Creek meets the Brisbane River. Leaders from the Pamphlett-Tennyson Sea Scouts donated their time to operate two tin boats from which volunteers collected litter from the water and creek/river banks whilst OCCA member Ian Lees collected litter in a kids 'sand shell' towed behind his canoe. The litter was audited in accordance with the methodology set out by Tangaroa Blue and all results were submitted to the Australian Marine Debris Initiative. Not surprisingly, plastic and foam packaging topped the list contributing to the total of over 76 kg of litter removed from the environment.



Sea World Community Marine Litter Clean up event



DIY rubbish collection courtesy of OCCA member Ian Lees

Signature (aka Feature) Events

‘Signature Events’ is a community engagement strategy that shares many of the same objectives as the Education, Corporate Volunteering and CreekWatch programs. Signature Events aims to:

- share and nurture environmental stewardship values within the community
- result in a direct or indirect positive environmental effect
- teach and/or demonstrate environmental sustainability principles and management strategies
- build relationships and make connections with other environmental groups and/or individuals
- market OCCA and its capabilities and increase memberships

The Education and Partnerships Team are currently excitedly working to develop our Signature Events strategy - aiming for a debut in early 2019.

***Emma Barry, Camilla Duff Burford, Lindsay Wickson and Karalyn Fletcher
Education and Partnerships Managers***

3.5. CATCHMENT PROGRAM MANAGER’S REPORT

Much of OCCA’s work is funded from Federal, State and local government grant programs, as well as through partnering with organisations which are also keen to see improvements to their land or local environments.

OCCA has been successful in securing a number of grants to undertake rehabilitation and education / awareness projects as follows:

Federal Government - Improving Your Local Parks and Environment Program

The IYLPE program has provided funding to augment the current restoration works at Granard Wetlands and provide ongoing restoration and maintenance funding over the next two years.

Logan City Council – Crewes Creek Weed Management

Following on from the Success of the Weed Management Workshops in 2017, Logan City Council initially engaged OCCA in a pilot project to engage 10 residents in active weed management on their properties. Since its commencement in December 2017 this has been expanded to 18 properties with additional funding from a Logan Envirogrant and other LCC program

funding. The project is led by Josh Hall from our Biodiversity Services team and engages residents with properties contiguous to Crewes Creek. Participants will have a tailored plan developed for their site and spend a day working alongside our restoration team. The participants will also be supported with native plants from the OCCA nursery and ongoing expert advice.

Brisbane City Council - Seed to Seedling Project

This project was developed to increase the diversity of native species OCCA has available to use in rehabilitation projects. Evan Davies from OCCA Biodiversity Services has developed a comprehensive guide identifying over 20 key native species not readily available in commercial or community. The guide features seed collection and propagation methodologies along with collection times and locations. In addition Evan hosted a workshop at OCCA's nursery to train participants in common seed preparation and striking techniques.

Brisbane City Council – Cliveden Pocket Management Plan

OCCA is engaging an Ecologist to develop a staged restoration plan for Cliveden Pocket including connectivity to Cliveden Avenue Reserve.

Myer Foundation

OCCA received a grant from the Myer Foundation to improve our capacity to successfully tender for larger scale environmental restoration projects and meet more stringent client QA/QC and HSE requirements: OCCA has engaged an industry consultant to work with OCCA staff and volunteers to review and rewrite OCCA Biodiversity Services' Integrated Management System and associated policies (Health and Safety Policy, Environment Policy, Standard Operating Procedures, etc) to a standard that will allow OCCA biodiversity Services to expand its client base.

In addition the grant will fund the development of a marketing tool that will allow Biodiversity Services to expand its client base by leveraging its unique position as a social enterprise whose profits support OCCA's environment and community programs. OCCA has engaged Healthy Land and Water to develop a monitoring program that allows us to assess the impact of potential on-ground restoration works not only on biodiversity and habitat but uniquely on the social, community, amenity and lifestyle value of such projects.

OCCA also has continuing partnerships to improve areas of Oxley Creek and its tributaries as follows:

Oxley Creek Common - 20 Million Trees Project. The 'Urban riparian corridor restoration at Oxley Creek Common' project, funded by the Australian Government's 20 Million Trees Programme, involves the planting and maintenance of 27,000 native shrubs and trees at the Oxley Creek Common, a unique 115 hectare open space on the northern and highly urbanised reaches of the Oxley Creek.

This year we completed the project which has seen over 9000 germinations from our direct seeding trials in the paddocks. This is in addition to the plantings that were part of a research project in partnership with the University of Queensland that aims to test the performance of two different species mixes ('Fast' growing vs. 'Hardy'). The remainder of the plantings are located as infill within the riparian zone and have been ably supported by our corporate volunteer teams, Wilderness Society volunteers and the amazing Tuesday Common Carers. A special thank you must also be given to Russell Osterfield, who volunteers his time and equipment to slash the perimeter of the paddock plantings.

Granard Wetlands – OCCA has partnered with Energex, IYLPE and the Brisbane City Council to eradicate weeds, plant 25 000 grasses, shrubs and trees and maintain Granard Wetlands over the next four years. Stable Swamp Creek flows through the wetland before joining Oxley Creek west of the Ipswich Motorway. The project was delayed for several months in 2018 due to a Brisbane City Council contaminated land audit. Fortunately OCCA has been cleared to continue at the site, albeit with a few amendments to the initial scope of the project. OCCA will be installing a sign on Granard Rd inviting community and industry participation in the ongoing enhancement of the site.

Phil Gunasekara, Catchment Programs Manager

3.6. BIODIVERSITY SERVICES MANAGER'S REPORT

Avid readers of the Biodiversity Service Managers report from previous years will be observing a common theme; the consolidation of relationships with our Project Partners and an increase in the diversity, breadth and number of Restoration Projects undertaken.

Biodiversity Services has continued the trajectory of growth in 2018 but has also focused attention on back of house projects; ensuring that our governance structures are robust, that the reporting to our funding bodies, land managers and project partners is timely and accurately reflects the agreed Project Scope and finding ways to streamline, or in some cases automate repetitive administrative tasks.

Biodiversity Services has bid on and been successful in obtaining large scale offset planting projects for Brisbane City Council. The preparation of the Tenders for these multi-year contracts is very much a collaborative effort and I would like to acknowledge the support of Phil Gunasekara, Josh Hall and Yan Suen.

Josh Hall has been tweaking and adding functions to Canvas, OCCA's reporting system of choice. Daily Activity reports, Checklists, Herbicide Distribution sheets, Toolbox talks, Accident/Incident reports and Project Risk Assessments are now filled out by Field Staff and emailed to OCCA for reporting and investigation in real time.

Josh has also been responsible for compiling Weed Management plans and Project Scopes for contracts with Logan City Council, Brisbane City Council, Healthy Land and Water, and the BMI Group.

OCCA is also rolling out Biocondition Rapid Assessment reporting (based on a methodology formulated by the Queensland Herbarium) to capture important ecological indicators pre, during and post site restoration work. The data will be used to strengthen our case for additional on ground project funding, to provide ecological restoration case studies documenting change over time.

Biodiversity Services has signed new contracts and commenced ecosystem restoration projects with Logan City Council (Crewes Creek and Spring Mountain Reserve), Brisbane City Council (Community Conservation Assistance, Wipe Out Weeds, and Habitat Brisbane Contractor support), Healthy Land and Water (Davidson Street Park), Oxley Creek Transformation P/L and Brisbane Catchments Network.

Biodiversity Services has drawn on the expertise of past and new restoration practitioners to assist with fulfilling a number of short term contracts in 2018. As well as our existing team of Evan Davies, Sam Mitchell-Whittington,

Dave Whitfield, Josh Hall, Will Charlton and Karalyn Fletcher, Richard Morble, Max Fowler-Roy, Yan Suen and Briganza Budd were able to bolster the capacity of Biodiversity Services at short notice. Lee-Anne Longton, a name familiar to many in the industry, joined the Biodiversity Services ranks in May.

Professional development opportunities for OCCA's Biodiversity Services staff have included Biocondition training, Medium Rigid vehicle licencing, standpipe accreditation and chainsaw/polesaw accreditation.

Thanks as always to the Biodiversity Services restoration practitioners and myriad volunteers. Their hard work, dedication and breadth of knowledge have once again ensured that OCCA's Biodiversity Services is the preferred supplier of rehabilitation services in the Brisbane and Logan City Council areas.

Chris Jensen, Biodiversity Services Manager

3.7. CREEKCARE COORDINATOR'S REPORT

The OCCA CreekCare team works every Thursday morning from 7am at one of ten different bushcare sites in the Oxley Creek Catchment - Jock Hing Park (Sunnybank), Benarrawa Park (Corinda), Cliveden Avenue Reserve (Corinda), Gaddes Park (Sunnybank), Russ Hall Park (Salisbury), Mayfly Reserve at Lawson and Kendall Streets (Oxley), Nosworthy Park (Corinda), Oxley Creek Common (Rocklea), Pennywort Creek at Deniven St & George Scarlett Park (Corinda) and Strickland Terrace Parklands (Sherwood). All the sites (except for the Oxley Creek Common) are Brisbane City Council Habitat Brisbane sponsored bush care sites and the Coordinators nominate what jobs they want us to do at each visit. These tasks generally include weed control, mulching, planting, staking, watering and litter removal.

2018 was another productive year for Creekcure with a dedicated team of 16 volunteers now on our books. The weather during the year was variable with good summer rain in February-March and then a long dry winter and spring until more good rain in October. The BCC Habitat Brisbane program continues to be an invaluable support to our groups and a few of our sites benefited from grant funding supporting major re-plantings, erosion control and weed control projects.

Our volunteering at Myall Park Botanic Gardens via Glenmorgan for their open day in August has become an annual event. This year a small group of volunteers from CreekCare (Noel, Marie, Mike and Maggie and Brian) helped prepare for their Spring Day. The weather was inclement with some welcome rain but fined up for the open day. Sue Akeroyd the Secretary had planned a variety of tasks to keep us busy. Once again we set up in the quarters, which is ideal for a group of likeminded volunteers. It's great for socialising but this year we only managed one night with the fireplace in action as the weather was unusually mild.



CreekCare volunteers making seedballs

We set to work doing a varied list of tasks from fitting stump caps to painting cupboards, labelling plants and clearing tracks. With the variety of tasks on Sue's list we all could find a job that suited our skills and we soon whittled down the list. The Spring Day was well attended and included a fun run/walk to honour long-time Secretary Janine Peachey who sadly passed away last year. The event raised over \$2500 for the gardens and the fun run/walk was very popular with all ages.

This year our activities included helping out with the parking at the Peaks to Points Festival, assisting a UQ University student with her project on community engagement and attending the 25th anniversary celebrations for the Benarrawa Bushcare Group. We also attended a seed ball making workshop at Benarrawa and Brian McDonald attended a Biodiversity workshop at The Hut Environment Centre.



UQ student interviewing Creekcure members for her project

During the year we welcomed new members Robyn Mulder and Lee-Anne Longton. All members of CreekCare are volunteers and while most of us are active retirees we encourage participation from students and young people wishing to gain work experience in bush rehabilitation and plant propagation. Without exception, all our Bushcare Coordinators appreciate the efforts of our hard working and dedicated volunteers.

We continue to receive excellent support from OCCA, Biodiversity Services, BCC's Habitat Brisbane and the Coordinators of our ten Bushcare groups.

Noel Standfast, CreekCare Coordinator

3.8. TUESDAY COMMON CARERS REPORT

Tuesday Common Carers work at the Oxley Creek Common every Tuesday from 7 – 9 am. Our aim is to remove invasive plants that stifle native habitat and to give native plants a chance to expand. We replant areas that have very little canopy, which adds to the diversity of the flora already there. During 2018 we have been working on a variety of sites.

We have continued to monitor the creek bank south of the pontoon, which has been a very difficult area, with an exposed bank and glycine smothering the plants on the creekbank. OCCA Biodiversity Services tidied up a huge fallen Celtis, which has allowed us to work more effectively in that area. A large swathe of Glycine was removed near the creek and the Phragmites have returned. Biodiversity Services has cleared and planted the troublesome bank down to the fence.

A second area we worked on was a gully not far from the first main corner of the track, removing *Commelina benghalensis*, Glycine, Asparagus fern and *Rivina humilis*. We need to revisit this site, as there is significant regrowth. Birdwatchers have enjoyed the cleared space, but it has revealed a large area lacking in canopy and understorey.

We have cleared south of Stony Gully and planted native grasses, *Dodonea*, *Cupaniopsis anacardioides*, *Eupomatia laurina*, and black pines. This area showed signs of feral deer, as several *Trema* had suffered from the bark being rubbed off.

We are now working on the creekbank south of the fence. Luke Nuttall's Green Army had planted this area, but it had been swamped by Green panic, Glycine and Asparagus fern. Our aim is to make a path to reach Stony Gully. This has almost been achieved and our work has revealed a lot of plants struggling under the weight of the grass and glycine. There is a large area of marine couch, self-seeded *Mallotus*, new mangroves and Tuckeroos.

Thanks to CreekCare's four visits so far this year where they tackled the difficult jobs. OCCA has also organised volunteer groups who have planted large areas. Biodiversity Services have been working on preparing those sites and eradicating the large infestations of Asparagus fern.

From January to the end of October, Tuesday Common Carers have worked 535 hours. Congratulations to these stalwart volunteers, some of whom spend additional hours reclaiming the area for native plants. We hope you can see the difference.

Mary Lou Simpson, Tuesday Common Carers Coordinator

3.9. NURSERY CORDINATOR'S REPORT

The OCCA Nursery, located in the shade house at the rear of the OCCA Catchment Centre, has been busily growing indigenous seedlings and plants throughout 2018. This is entirely due to the great efforts of the dedicated group of volunteers who work in the facility every Thursday from 10.00am until noon including Sam Franklin, Jill Ridgway, Brian Macdonald, Richard Thomson and Evan Davies.

This last year the Nursery volunteers have propagated a range of species which have been used in the rehabilitation of the Oxley Creek Common and Granard Wetlands. Plants have also been given to Habitat Brisbane Bushcare groups, schools and community groups as well as OCCA members.

Feel free to join us on Thursday mornings if you have some time. It is not hard work but it is a great feeling to know that the output from the nursery is helping to enhance flora habitats along Oxley Creek.

Beryl Roberts, Nursery Manager

3.10. VOLUNTEER MANAGER'S REPORT

Our volunteers and student internships provide OCCA with extra hours needed to accomplish our programs and we are most grateful for their dedication and commitment.

The Oxley Creek catchment is truly fortunate to benefit from the dedication of our CreekCare, Tuesday Common Carers and Nursery volunteers, led by Noel Standfast, Mary-Lou Simpson and Beryl Roberts respectively. Their work can be seen in many of the natural areas of the catchment through assistance provided to Habitat Brisbane groups and the native plants used in many of our restoration sites.

This year we were fortunate to host another round of interns from Griffith University. Pankaj Ram Kaushik, Isabella Routledge, Kayla Lynch, Samim Ehsan, Pariza Mahbub and Briganza Budd worked on a range of projects including:

- Fauna monitoring
- Vegetation surveys and restoration trials
- Regeneration work at various sites in the catchment
- Assistance with CreekWatch activities
- Litter audits
- Water quality monitoring
- Education days
- Community engagement activities

Students from the UQ Business, Economics and Law Student Employability Team (BEL SET) Community Engagement Program also provided assistance to OCCA. Araceli Rodriguez, Tara Slocombe, Xi Chen and Alex Watson were supervised by Masud Hossain Majumder and produced a marketing strategy for OCCA to better promote our activities and achievements, elements of which we are now putting into practice.

We were also fortunate to have the support of a second team of students to develop a strategy for relocating our catchment centre to a permanent location. Luisa Alonso, Harry Profke, Riqian Li, Ziyang Zhao, Yingyi Wei, Ramith Samayamanthre and project adviser, Mridul Dutt

OCCA would also like to thank Carole Bristow, Yan Suen, John Dwyer, Luke Shoo, Pankaj Kaushik and Briganza Budd for regularly volunteering their time and sharing their expertise on our projects.

Last, but certainly not least, the knowledge, efforts and time of our volunteer Management Committee are critical to our functioning.

Phil Gunasekara - Catchment Programs Manager

3.11. PEAKS TO POINTS FESTIVAL REPORT

The Peaks to Points Festival is a biennial, regional, environmental festival celebrates the natural areas from Flinders Peak in the west, the source of Oxley Creek, to all the points on Moreton Bay south of the Brisbane River mouth - Point Halloran, Wellington Point and Victoria Point to name but a few. Through displays at the Family Day and events and activities over the two weeks the Festival aimed to raise awareness of the importance of the Flinders-Greenbank-Karawatha natural areas corridor and showcase and celebrate the activities of local groups, governments and industry to improve their natural environments.

The Festival was held over two weeks from 14 - 29 July 2018 with the Festival Family Day held at the Oxley Creek Common on 15 July. The sixth Peaks to Points Festival was bigger and better than before. Over 5000 people enjoyed a mix of 40 activities and events at 37 locations across the southside of the Brisbane River. The Peaks to Points Festival was officially opened on 15 July at the Festival Family Day. Councillor David McLachlan, representing the Lord Mayor Graham Quirk, spoke, as did Lynn Whitfield, Secretary Oxley Creek Catchment Association, and Chair Peaks to Points Festival.



All the displays from environment, history, and community groups generated considerable interest amongst Festival patrons. Many stallholders included an interactive environmental component in their displays to encourage community interaction. OCCA engaged children to identify macroinvertebrates from samples of Oxley Creek water.

Family Day entertainment included local musicians and groups from Corinda State High School, a children's magic show, and a street science show. A petting zoo, climbing wall, inflatable obstacle course, sherbert workshop, messy play and an orienteering activity were all very popular, as was our

mascot Shoop the Sugar Glider. The popularity of Family Day was evidenced by all the food providers selling out well before the day finished.

A wide range of displays attracted people's interest including electric cars and bicycles, Queensland Urban Utilities Pooh Car, community garden produce, the Police Service, National Parks Association and various community groups.

Most activities during the Festival were intentionally small scale and intimate so that people could easily talk to the group members about the area and their work. Events and activities included a spotlighting walk at Minnippi Parklands, guided walks of Wolston Creek, Whites Hill, Cliveden Recreation Reserve, Possum Creek parklands, Kuraby Nature Reserve, Spring Mountain Forest Park, Spring Mountain, and White Rock Conservation Area, a movie 'The Environmental Cowboy', birdwatching at Purga, Oxley Creek Common, Rosewood, Venman Bushland Reserve, and Granard Wetlands, planting activities at Graceville, Middle Park, Mount Gravatt, Runcorn, Eagleby, Corinda, Indooroopilly, Coalfalls, Ipswich, and Spring Mountain, workshops on nestbox building, plant propagation, native stingless bees, and composting and worm farms, a scavenger hunt at Wishart, a biodiversity seminar at Karawatha Discovery Centre, and tours of the Oxley Creek Catchment Centre, Oxley Men's Shed, Greenbank Military Training Area, the Oxley Wastewater Treatment Plant, and natural areas around Ipswich.

The Festival was organised by the Oxley Creek Catchment Association Inc with Team Lacey Consultancy providing event and marketing management support. The marketing and publicity plan was designed to gain maximum media exposure for the Festival through web, print, radio, and social media, with minimal paid advertising. There was a focus on social media, particularly through Facebook. Banners and posters were displayed in selected high-traffic areas. Festival programs and flyers highlighting the Family Day were distributed via ward offices, participating groups, community facilities, railway stations and at the Brisbane Markets. Social media and digital marketing are obviously the way to go in the future as in 2018 we experienced a 300% increase in facebook traffic, reaching 34,000 users. We were also successful in getting extensive web-based coverage through a number of media and blog platforms, reaching over 400,000 users. Brisbane City Council was again the major supporter. This year the Festival was also sponsored by Brisbane MarketPlace which presented the Family Day, Lendlease, Queensland Urban Utilities and Oxley Creek Transformation Pty Ltd.

State and Federal Government members and Councillors from Brisbane City Council, Logan City Council, and Ipswich City Council supported the Festival. State Government support was provided by the Department of Housing and Public Works, the managers of the Oxley Creek Common. The Federal Government supported the Festival through the involvement of the Department of Defence.

Oxley Creek Catchment Association staff and volunteers who supported the overall coordination of the Festival Family Day helping out with traffic management, site management and general information duties, in particular Phil Gunasekara, Chris Jensen, Evan Davies, Josh Hall, Emma Barry, Lindsay Wickson, Susan Hodgson, David Kent, Trevor Armstrong, Beryl Roberts, Leah Cohen, Cassie Fox, Mick Richardson, Brian Macdonald, Noel Standfast, Ray Ison, Wayne Brown, Kirsten Marano, Maddi Marano, Dave Whitfield and Richard Whitfield.

Oxley Creek Catchment Association is also very grateful to all of the estimated 300 volunteers of other participating organisations who helped out at the Family Day and/or hosted other Festival events.

The ongoing support of so many environmental and community groups, government organisations and industry sponsors and supporters have ensured that the Festival is a fixture in the South East Queensland environmental events calendar.

Lynn M Whitfield, Chair Peaks to Points Festival

3.12. BCC CREEK CATCHMENT OFFICER'S REPORT

Brisbane City Council (BCC) supports its ten creek catchment groups in a variety of ways. One of the major ways we contribute to community conservation efforts is through the provision of Creek Catchment Officers, of whom one is dedicated to supporting Oxley Creek Catchment Association (OCCA).

Recent changes in the team have brought back in Adam Richardt (who was OCCA's Creek Catchment Officer back in 2014), while Donna Edwards continues to provide support. Over 2018 the Creek Catchment Officers have:

- Assisted OCCA with promotion of events through Council and stakeholders.
- Facilitated and coordinated efforts to rehabilitate Billabong Place (Sheep Station Gully, Parkinson), including organising approvals needed for proposed projects, and organising contractors to manage planting sites and thick vine thickets.
- Assisted with the ongoing Granard Wetlands contaminated land investigations, to ensure OCCA and its volunteers and partners can work there safely. The site now has designated zones with clear instruction on what activities can occur and who can conduct them.
- Arranged for one of the BCC Horiba water-testing kits to be permanently loaned to OCCA.
- Liaised within BCC to arrange approvals to work on public land.
- Arranged for university students in the Student Catchment Immersion Program (SCIP) to participate in an OCCA working bee.
- Helped develop maintenance plans for the Success Street Park rehabilitation with Rockpress.

The SCIP drew together 20 students from Queensland University of Technology environmental courses, and exposed them to catchment groups to experience volunteering and practical application of citizen science and action and provide opportunities for them to offer their volunteer services in the future. In 2018, OCCA hosted the group at Kookaburra Park in Rocklea.

BCC has continued its commitment to assist community conservation efforts through its CCA program for small- to medium-sized projects with areas which are a bit hard-to-get-to or not appropriate for volunteers (e.g. they might be on a steep slope, or have overwhelming weed issues). BCC employs contractors on these sites to augment the overall catchment efforts. Two CCA projects (Lawson St Park and Success St Park) were completed during 2017-18. They have both been very successful in helping provide the connectivity in the landscape for which we all strive. BCC looks forward to working with OCCA as they maintain these sites over the next two years.

BCC is currently managing CCA projects in Sergeant Dan Stiller Memorial Reserve (Larapinta) and Billabong Place (Parkinson), eradicating weeds and preparing planting sites prior to OCCA undertaking ongoing site maintenance.

Over the past year the CCO's have also:

- helped link BCC's Pollution Prevention staff with OCCA's CreekWatch program, and helped create a CreekWatch Engagement Plan at Success Street Park
- funded OCCA staff members to undergo First Aid training
- aligned BCC's and OCCA's nestbox monitoring programs

It has been great working with such a dedicated group of people. OCCA just keeps getting stronger and we are very excited to continue to be involved with OCCA as we head into 2019! We remain on hand to help wherever we can, and it has been an absolute pleasure trying to do our best for you.

Adam Richardt and Donna Edwards, BCC Creek Catchment Officers

3.13. TREASURER'S REPORT

Treasurer's Report to AGM presenting the OCCA accounts for the financial year ending 30 September 2018. The accounts, audited by Peter I Price & Associates are included within the Annual Report and are available to those who wish to have a copy.

As noted in previous Treasurer Report's, OCCA although a not-for-profit association is required to comply with complex regulation and legislation that govern OCCA's grant applications, acquittals, the ATO's Deductible Gift Recipients rules and funding whilst complying with our auditing obligations.

The financial aspects of OCCA for the 2017-2018 period were very well managed by OCCA's Bookkeeper Susan Hodgson, who also implemented and maintained office procedures for the year, all of which was overseen by the Executive Officer, Anne Clarke.

The 2017-2018 financial year saw OCCA record a profit of \$32,465 increasing the net profit from 2016-2017 \$16,660 by \$15,805. OCCA's two main income avenues for the year were generated from Biodiversity Services (Regeneration Work) and Grants Income.

The income generated from Regeneration Work decreased by \$6596, receiving a total of \$287,647 for the 2017-2018 period. Grants income decreased by \$103,292, receiving a total of \$144,591 for 2017-2018.

Total Membership income did see a decrease of \$369 recording total income of \$1045 for the 2017-2018 period, with the majority of decrease seen in the

Corporate/Community/School membership category, with concession, household and individual membership income remaining fairly stable.

The overall total income recorded for the 2017-2018 period was \$454,426, which is a decrease of \$107,649 on the 2016-2017 period.

The total expenses also decreased, with the total expenses for the 2017-2018 period being \$426,984, a decrease of \$124,235 on the 2016-2017 period.

The next financial year will again be a challenging one, with the main financial focus needing to be on implementing strategies to increase income from regeneration works, remaining competitive in grant acquisitions and exercising tighter controls on expenditure.

OCCA's Balance Sheet remains in a good financial position to continue striving forward to achieve its vision and objectives for the benefit of the whole Oxley Creek Catchment.

OCCA's total equity/net assets as at the end of the 2017-2018 financial period was \$349,632.

Nadia Mislin, Treasurer



4. AUDITOR'S REPORT & STATEMENTS OF ACCOUNTS

**PETER I. PRICE
& ASSOCIATES PTY LTD**

(ABN: 73 010 341 250)

Phone : (07) 3376 3411

Fax : (07) 3376 8904

CERTIFIED PRACTISING ACCOUNTANTS
TAX AGENTS

15 Loffs Road
PO Box 465
Mount Ommaney Qld 4074

Independent Audit Report to the Members of

Oxley Creek Catchment Association Incorporated

AUDIT REPORT

I have audited the Financial Statements of the **Oxley Creek Catchment Association Incorporated** consisting of Statement of Financial Position and Statement of Financial Performance for the year ended 30 September 2018.

My audit has been conducted in accordance with Australian Auditing Standards to provide reasonable assurance as to whether the financial statements are free of material mis-statement. Audit work was confined to confirming amounts recorded in the Associations records and was done on a test basis. I have not verified the existence or valuation of stock or non-current assets.

As is common for organisations of this type, it is not practical to maintain an effective system of internal control over takings and other fundraising activities until their initial entry in the accounting records. According, my Audit in relation to these types of receipts was limited to the amounts recorded and banked.

In my opinion, the Financial Statement presents fairly in accordance with the Associations Incorporation Act, the financial position of the Oxley Creek Catchment Association Incorporated as at 30 September 2018 and the results of the operation for the year then ended.

Dated at Brisbane, this 29th day of October 2018



Peter I Price
Auditor
PETER I PRICE & ASSOCIATES

OXLEY CREEK CATCHMENT ASSOCIATION INCORPORATED
PROFIT & LOSS PREV YEAR COMPARISON
YEAR ENDED 30 SEPTEMBER 2018

	2018	2017	\$ Change	% Change
Ordinary Income/Expense				
Income				
Admin Fees	881.00	0.00	881.00	100.0%
Booklet Sales	45.00	50.00	(5.00)	(10.0%)
Fundraising Income	81.95	0.00	81.95	100.0%
Insurance Recovery	0.00	3,010.00	(3,010.00)	(100.0%)
Nursery Sales	264.00	55.00	209.00	380.0%
Partnerships				
Corporate Volunteering	8,760.01	2,969.48	5,790.53	195.0%
4010 - Consulting Income	5,216.91	2,707.27	2,509.64	92.7%
Total Partnerships	13,976.92	5,676.75	8,300.17	146.21%
Regeneration Work Income	287,646.92	294,243.13	(6,596.21)	(2.24%)
Gifts and Donations Income	3,390.00	3,650.00	(260.00)	(7.12%)
Membership Dues	1,045.00	1,414.54	(369.54)	(26.12%)
4110 - Grants Income	144,591.49	247,883.75	(103,292.26)	(41.67%)
4150 - Miscellaneous Income	185.65	57.00	128.65	225.7%
4190 - Reimbursed Expenses	2,318.35	6,035.01	(3,716.66)	(61.58%)
Total Income	454,426.28	562,075.18	(107,648.90)	(19.15%)
Expense				
Accounting Fees	1,500.00	526.09	973.91	185.12%
Association fees	53.50	51.70	1.80	3.48%
Audit Fees	2,573.64	1,622.73	950.91	58.6%
Bad Debt Expense	0.00	142.00	(142.00)	(100.0%)
Bank Service Charges	59.00	85.77	(26.77)	(31.21%)
Bookkeeping	0.00	221.00	(221.00)	(100.0%)
Catering	940.49	560.13	380.36	67.91%
Chemicals	3,559.47	5,677.28	(2,117.81)	(37.3%)
Community Activities Expense	37.36	60.00	(22.64)	(37.73%)
Computer & Associated Costs	3,550.85	881.57	2,669.28	302.79%
Conferences	0.00	54.55	(54.55)	(100.0%)
Consulting	0.00	14,298.90	(14,298.90)	(100.0%)
Consumables	1,301.54	2,290.83	(989.29)	(43.18%)
Council Refuse/Waste Fees	28.91	21.46	7.45	34.72%
Depreciation Expense	8,937.46	15,950.59	(7,013.13)	(43.97%)
Equipment - tools, small equip	1,213.51	0.00	1,213.51	100.0%
Equipment Hire	698.00	643.60	54.40	8.45%
Equipment Purchase	1,181.73	6,330.66	(5,148.93)	(81.33%)
First Aid Supplies	15.41	0.00	15.41	100.0%
Freight Charges	235.00	30.00	205.00	683.33%
Fuel	4,305.06	5,066.93	(761.87)	(15.04%)
Grant Overruns	0.00	2,840.17	(2,840.17)	(100.0%)
Insurance	3,773.70	6,813.08	(3,039.38)	(44.61%)
Interest on Credit Card	0.00	22.32	(22.32)	(100.0%)
Licenses and Permits	0.00	62.55	(62.55)	(100.0%)
Materials purchased for job	3,013.03	15,180.65	(12,167.62)	(80.15%)
Motor Expense	8,615.27	6,329.70	2,285.57	36.11%
Moving Costs	0.00	733.07	(733.07)	(100.0%)
Nursery Cost	31.64	526.50	(494.86)	(93.99%)
Payroll Expenses	362,145.28	400,690.82	(38,545.54)	(9.62%)
Plant Purchases	4,102.50	21,961.08	(17,858.58)	(81.32%)
Printing, Reproduction, Artwork	881.44	1,004.29	(122.85)	(12.23%)
Repairs/Maintenance - Equipment	3,331.62	3,818.11	(486.49)	(12.74%)
Repairs/Maintenance - Other	0.00	104.80	(104.80)	(100.0%)

OXLEY CREEK CATCHMENT ASSOCIATION INCORPORATED
PROFIT & LOSS PREV YEAR COMPARISON
YEAR ENDED 30 SEPTEMBER 2018

	2018	2017	\$ Change	% Change
Safety Equipment	633.37	637.13	(3.76)	(0.59%)
Small Debts Written Off	2.90	0.00	2.90	100.0%
Staff Amenities	0.00	197.80	(197.80)	(100.0%)
Stationery & Office Supplies	1,358.57	2,010.09	(651.52)	(32.41%)
Subcontractor expenses	750.00	23,788.77	(23,038.77)	(96.85%)
Subscription	200.00	200.00	0.00	0.0%
Telecommunications	285.94	1,721.83	(1,435.89)	(83.39%)
Training	3,100.00	3,327.09	(227.09)	(6.83%)
Travel Expenses	0.00	180.91	(180.91)	(100.0%)
Uniforms & protective clothing	1,655.26	1,670.22	(14.96)	(0.9%)
Utilities	209.50	2,881.72	(2,672.22)	(92.73%)
Volunteer Costs	512.30	0.00	512.30	100.0%
Water Purchase BSU	2,190.27	0.00	2,190.27	100.0%
Total Expense	426,983.52	551,218.49	(124,234.97)	(22.54%)
Net Ordinary Income	27,442.76	10,856.69	16,586.07	152.77%
Other Income/Expense				
Other Income				
Interest Income	5,022.58	5,803.64	(781.06)	(13.46%)
Total Other Income	5,022.58	5,803.64	(781.06)	(13.46%)
Net Other Income	5,022.58	5,803.64	(781.06)	(13.46%)
	32,465.34	16,660.33	15,805.01	94.87%

OXLEY CREEK CATCHMENT ASSOCIATION INCORPORATED
BALANCE SHEET PREV YEAR COMPARISON
AS AT 30 SEPTEMBER 2018

	2018	2017	\$ Change	% Change
ASSETS				
Current Assets				
Chequing/Savings				
Bank Aust General Account	201,127.66	174,804.67	26,322.99	15.06%
Bank Aust Gift Account	6,923.79	5,974.45	949.34	15.89%
Bank Aust Term Deposit	100,000.00	100,000.00	0.00	0.0%
Total Chequing/Savings	308,051.45	280,779.12	27,272.33	9.71%
Accounts Receivable				
1200 · Accounts Receivable	70,621.48	64,676.73	5,944.75	9.19%
Total Accounts Receivable	70,621.48	64,676.73	5,944.75	9.19%
Total Current Assets	378,672.93	345,455.85	33,217.08	9.62%
Fixed Assets				
Computer Equipment at WDV	853.50	1,707.52	(854.02)	(50.02%)
Display Equipment at WDV	3.46	6.95	(3.49)	(50.22%)
Motor Vehicle at WDV	5,104.16	10,208.33	(5,104.17)	(50.0%)
Plant and Equipment at WDV	2,884.81	5,769.63	(2,884.82)	(50.0%)
Storage container at WDV	1,022.29	1,113.25	(90.96)	(8.17%)
Total Fixed Assets	9,868.22	18,805.68	(8,937.46)	(47.53%)
TOTAL ASSETS	388,541.15	364,261.53	24,279.62	6.67%
LIABILITIES				
Current Liabilities				
Accounts Payable				
2000 · Accounts Payable	0.00	2,018.57	(2,018.57)	(100.0%)
Total Accounts Payable	0.00	2,018.57	(2,018.57)	(100.0%)
Other Current Liabilities				
Grants				
CCW001 - Catchment Centre	0.00	1,538.98	(1,538.98)	(100.0%)
CMD1711	0.00	199.63	(199.63)	(100.0%)
CMD181 Marine Debris	1,024.55	0.00	1,024.55	100.0%
Creekwatch Grants	7,536.05	2,667.33	4,868.72	182.53%
EEG002 Everyone's Env Grant 002	0.00	20,624.66	(20,624.66)	(100.0%)
ENV180 Cliveden	11,692.50	0.00	11,692.50	100.0%
IYLPE001	5,562.76	9,800.00	(4,237.24)	(43.24%)
LCC003 EnviroGrant	0.00	832.11	(832.11)	(100.0%)
LCC181 Spring Mtn Res	2,893.07	0.00	2,893.07	100.0%
LCC182 Cr Ck Exp Eng	4,600.00	0.00	4,600.00	100.0%
OCC20MT	(29,798.10)	(20,773.60)	(9,024.50)	(43.44%)
P2P 2018	(34,751.17)	0.00	(34,751.17)	(100.0%)
SEQ CFC	0.00	(6,987.98)	6,987.98	(100.0%)
SEQC01 Speedy's Paddock	0.00	2,450.00	(2,450.00)	(100.0%)
TMF001	38,139.20	0.00	38,139.20	100.0%
Total Grants	6,898.86	10,351.13	(3,452.27)	(33.35%)
2100 · Payroll Liabilities				
PAYG Payable	12,965.98	9,510.00	3,455.98	36.34%
Superannuation Payable	9,274.34	8,560.32	714.02	8.34%
Total 2100 · Payroll Liabilities	22,240.32	18,070.32	4,170.00	23.08%
2200 · Tax Payable				
2200 · Tax Payable - Other	9,769.92	16,654.80	(6,884.88)	(41.34%)
Total 2200 · Tax Payable	9,769.92	16,654.80	(6,884.88)	(41.34%)
Total Other Current Liabilities	38,909.10	45,076.25	(6,167.15)	(13.68%)
Total Current Liabilities	38,909.10	45,076.25	(6,167.15)	(13.68%)
TOTAL LIABILITIES	38,909.10	47,094.82	(8,185.72)	(17.38%)

**OXLEY CREEK CATCHMENT ASSOCIATION INCORPORATED
BALANCE SHEET PREV YEAR COMPARISON
AS AT 30 SEPTEMBER 2018**

	2018	2017	\$ Change	% Change
NET ASSETS	349,632.05	317,166.71	32,465.34	10.24%
EQUITY				
1110 - Retained Earnings	317,166.71	305,506.38	11,660.33	3.82%
1111 - Prior Year Adjustment	0.00	(5,000.00)	5,000.00	100.0%
Net Income	32,465.34	16,660.33	15,805.01	94.87%
TOTAL EQUITY	349,632.05	317,166.71	32,465.34	10.24%

5. MAPS OF OCCA PROJECT SITES

